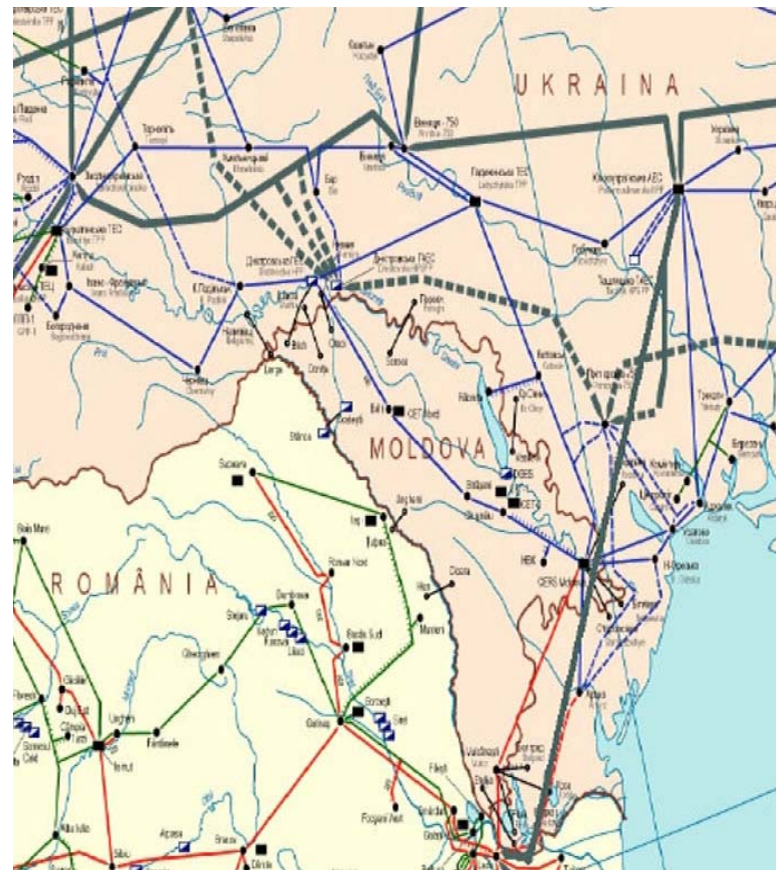
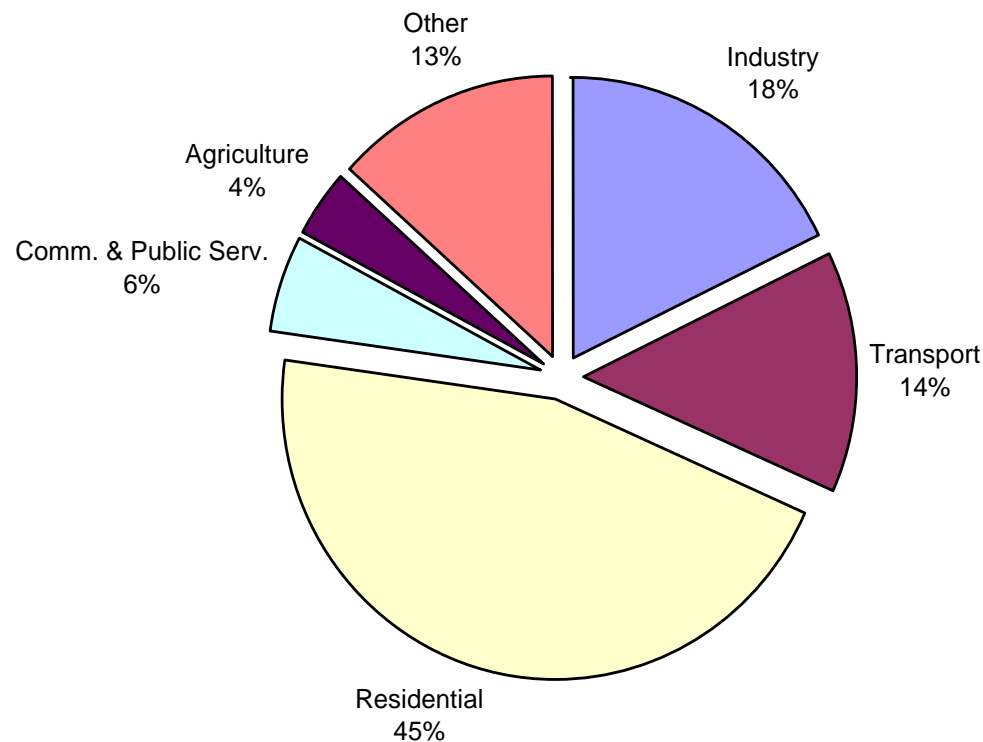


Republic of Moldova Energy Report

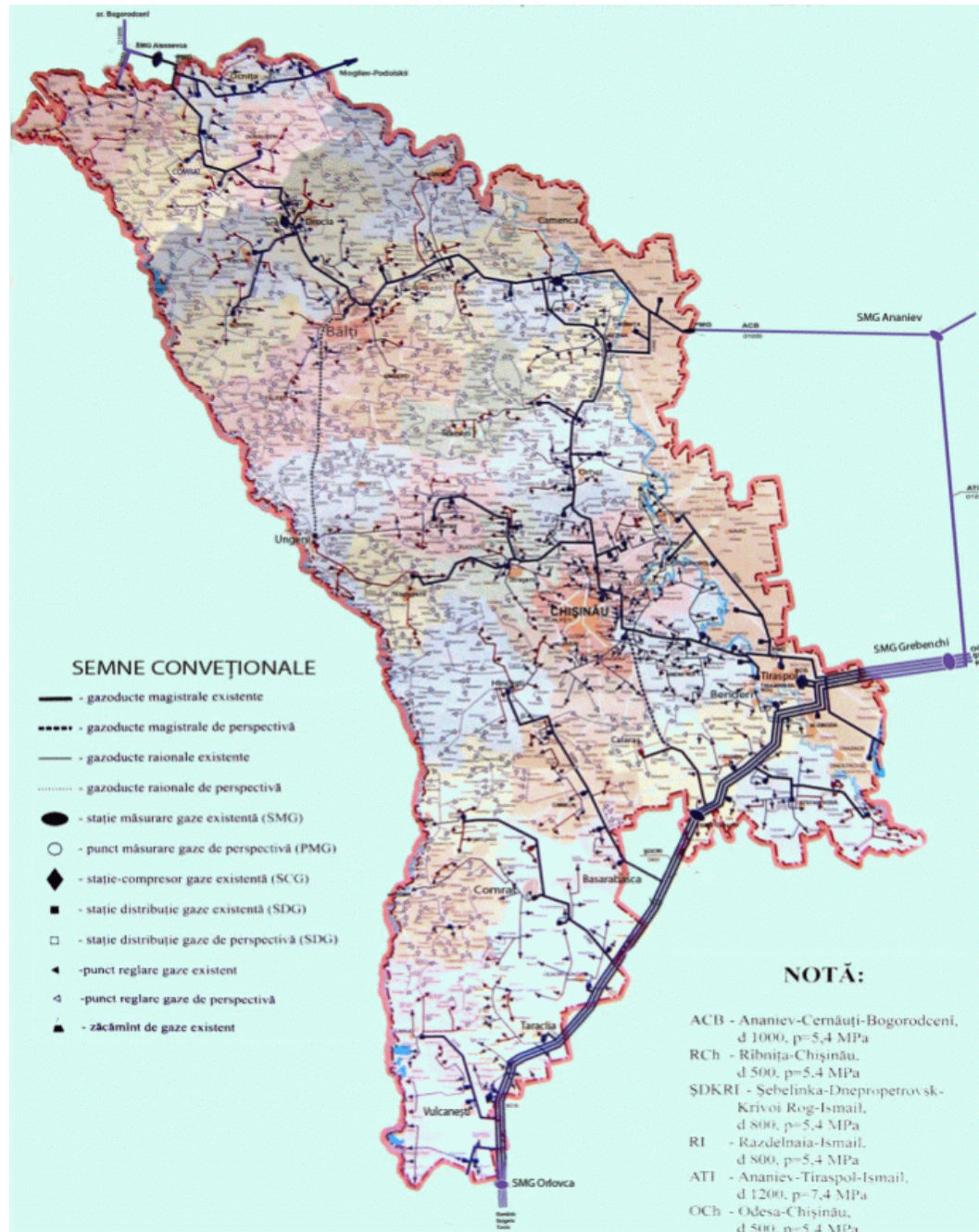


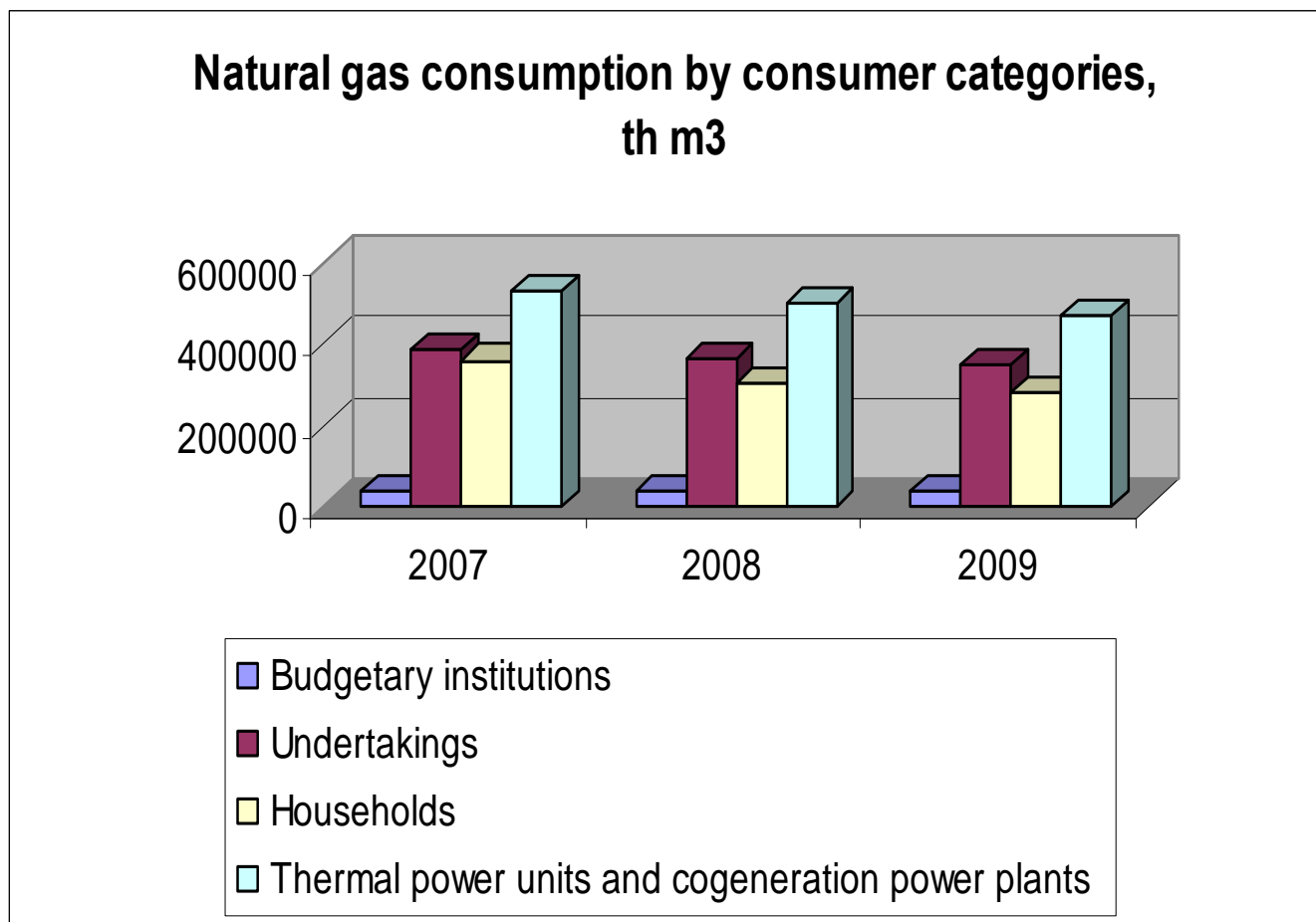
Energy balance of the Republic of Moldova



97 % of the country's energy needs are imported. Imports include natural gas, oil products, coal and electricity. Imported natural gas dominates the country's energy balance. In 2005-2009 period of time, natural gas accounted for 45 % of primary energy supply to

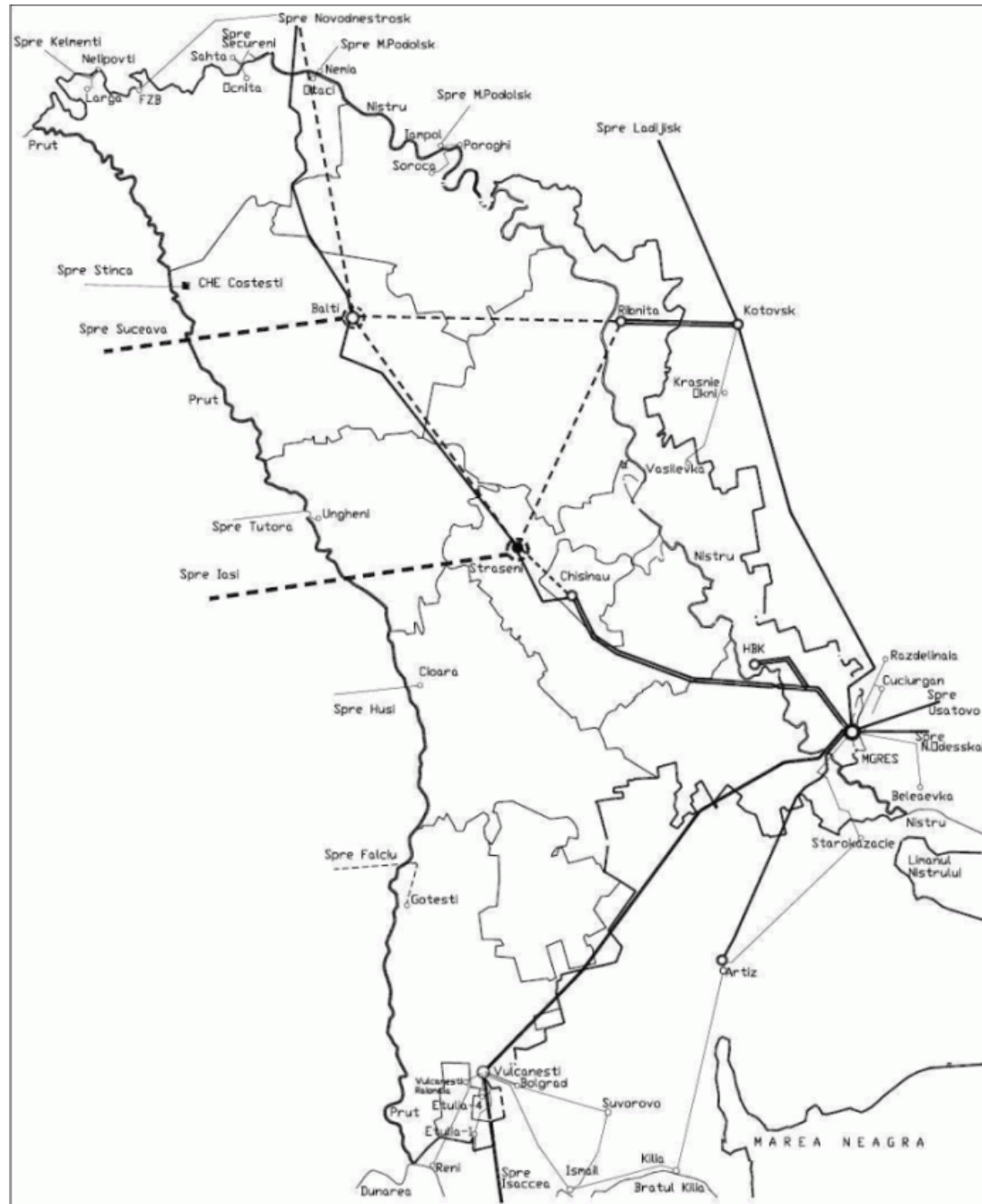
Gas pipeline national network





Average gas consumption of RM is about 1,25 bln m3 per year, with slight decrease in the last 2 years

National network of electric wires



Moldova's power system includes a condensing power plant with high capacity located in Transnistria, three thermal power plants, two hydroelectric plants and 10 mini powerplants of sugar-producing factories.

Thermal Power Plants of the RM

	CERM	CET-1	CET-2	CET-Nord	CHE Dubăsari	CHE Costești	Sugar Factories
Electric capacity (MW)	2520	66	240	28,5	48	16	98

ありがとう

Arigatō