

IEEJ: 2010年3月掲載

Institute of Energy Economics, Japan (IEEJ)
18 February, 2010
Convention Hall at the Prince Park Tower, Tokyo

PREPARATORY COMMISSION FOR
INTERNATIONAL
RENEWABLE
ENERGY AGENCY **IRENA**

IRENA: Targets, Activities and Cooperation with Japan

Contents

- 1. Background**
- 2. What is IRENA?**
- 3. Current Status of IRENA**
- 4. Next steps**
- 5. Japans Contribution to IRENA**
- 6. Request to Japanese Industry and Academia**

1. Background

Urgent global challenges related to energy issues

Increasing global energy demand

Energy security

Global warming

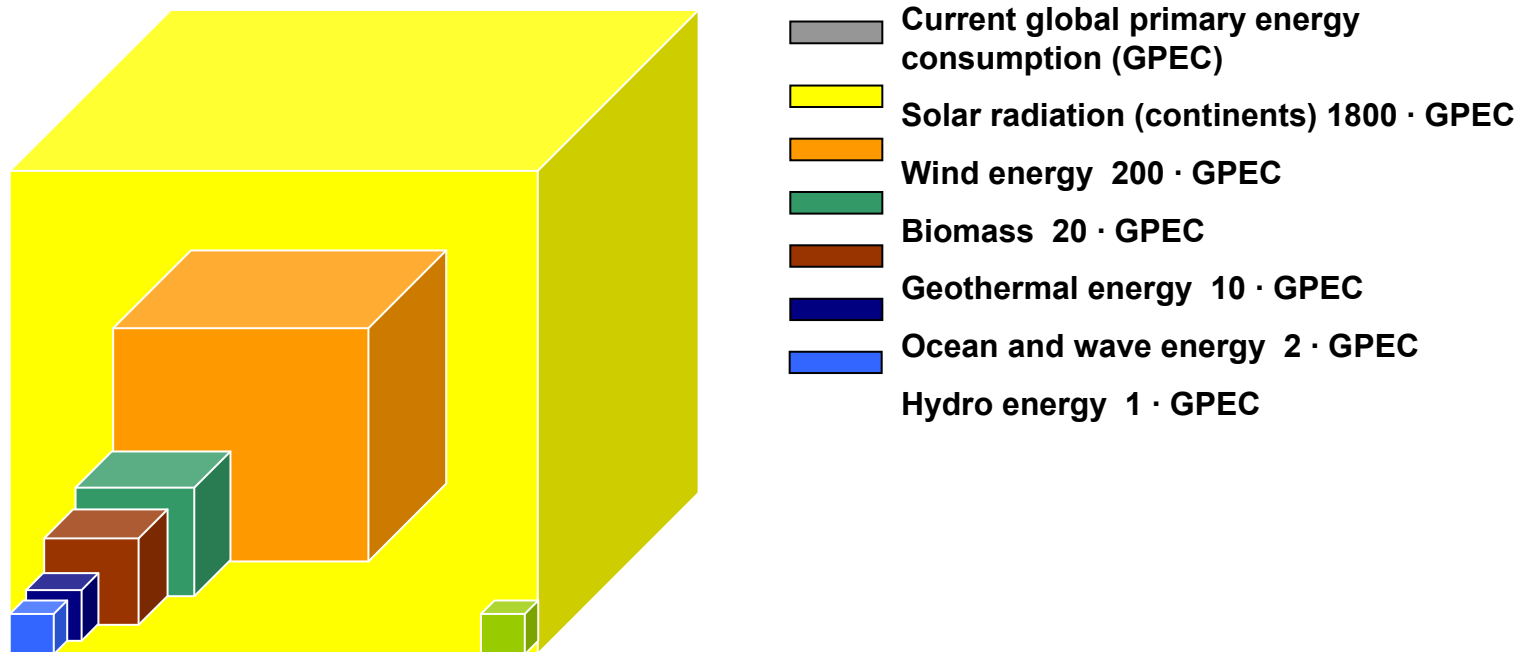
Poverty alleviation

Volatile energy prices

Economic and financial crisis

1. Background

Mobilise the huge potential of renewable energies



Source: Nitsch, F.: Technologische und energiewirtschaftliche Perspektiven erneuerbarer Energien. German Aerospace Center. 2007.

2. What is IRENA?

- Mandated by governments worldwide, IRENA aspires to become the main **driving force** for promoting a **rapid transition** towards the widespread and sustainable **use of renewable energy** on a global scale.
- Acting as the **global voice for renewable energies**, IRENA envisages providing practical advice and support for both **industrialised and developing countries**, thereby helping to **improve frameworks** and **build capacity**.

Institute of Energy Economics, Japan (IEEJ)
18 February, 2010
Convention Hall at the Prince Park Tower, Tokyo

2. What is IRENA?

Foundation: **26 January 2009** in Bonn (75 states signed the Statute of IRENA)

Members: **142 and the EU** (as of today)

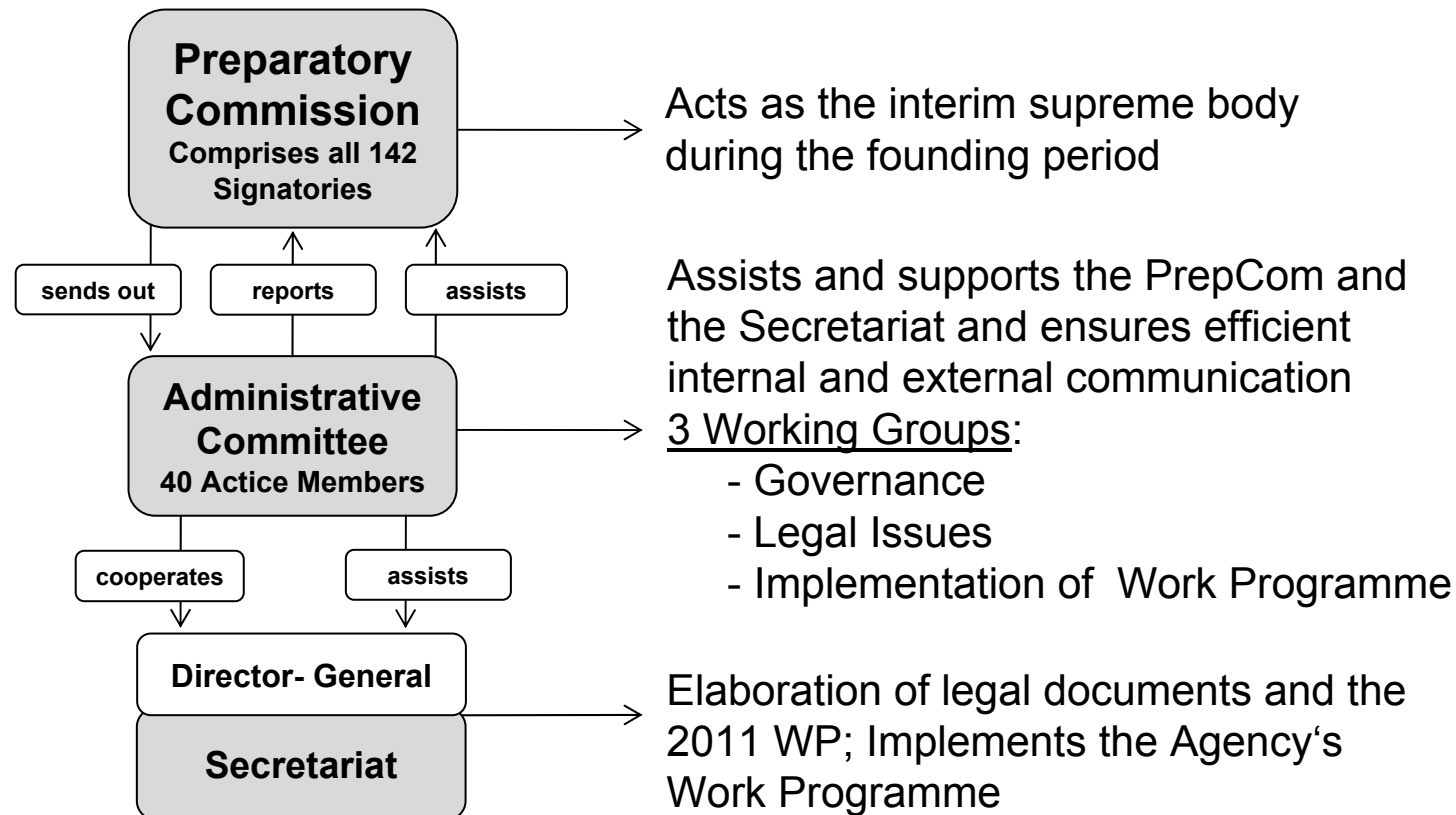
Director-General: **Ms. H el ene Pelosse**

Headquarters: **Abu Dhabi, United Arab Emirates**

Budget 2010: **13.69 Mio USD**

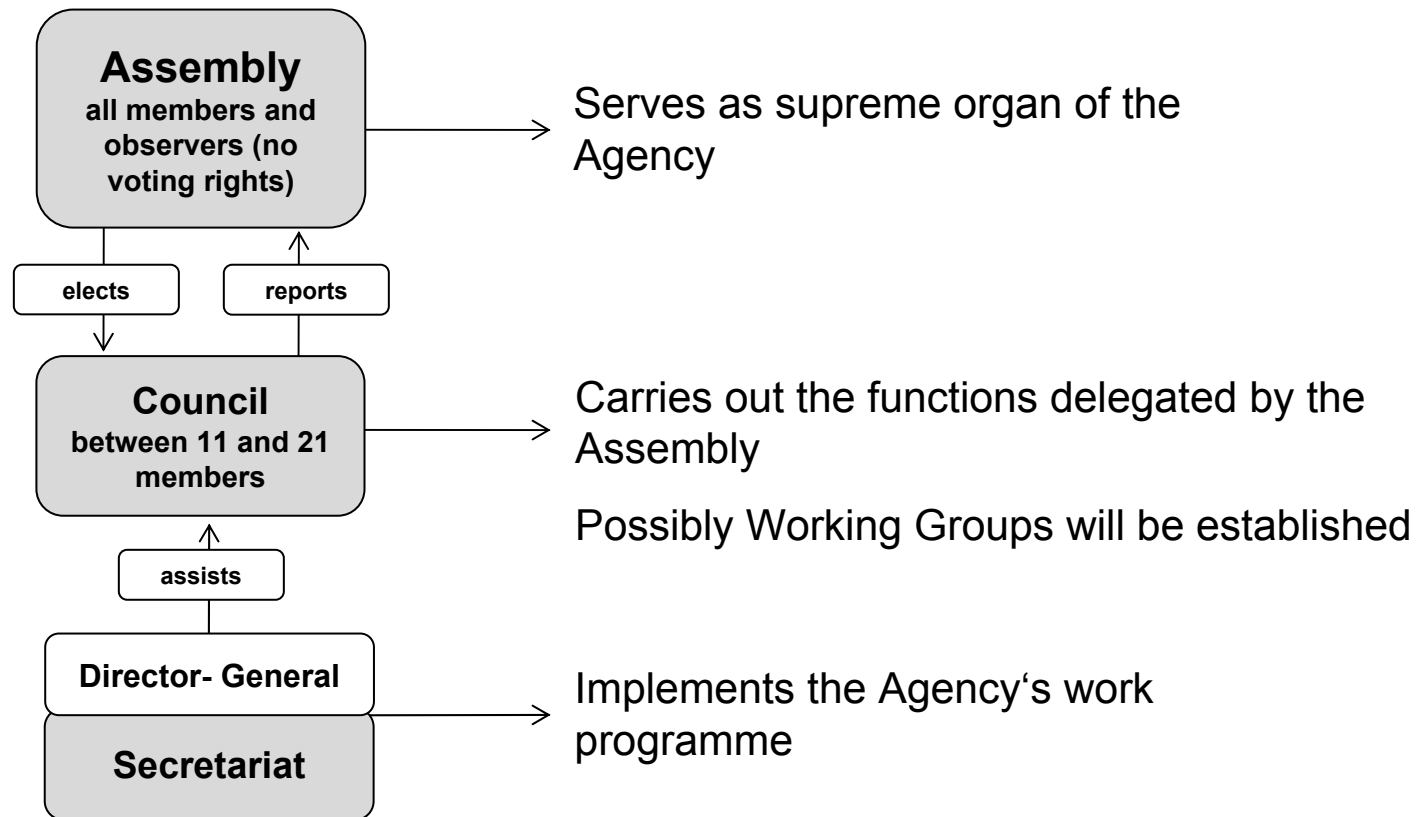
3. Current Status of IRENA

Current structure



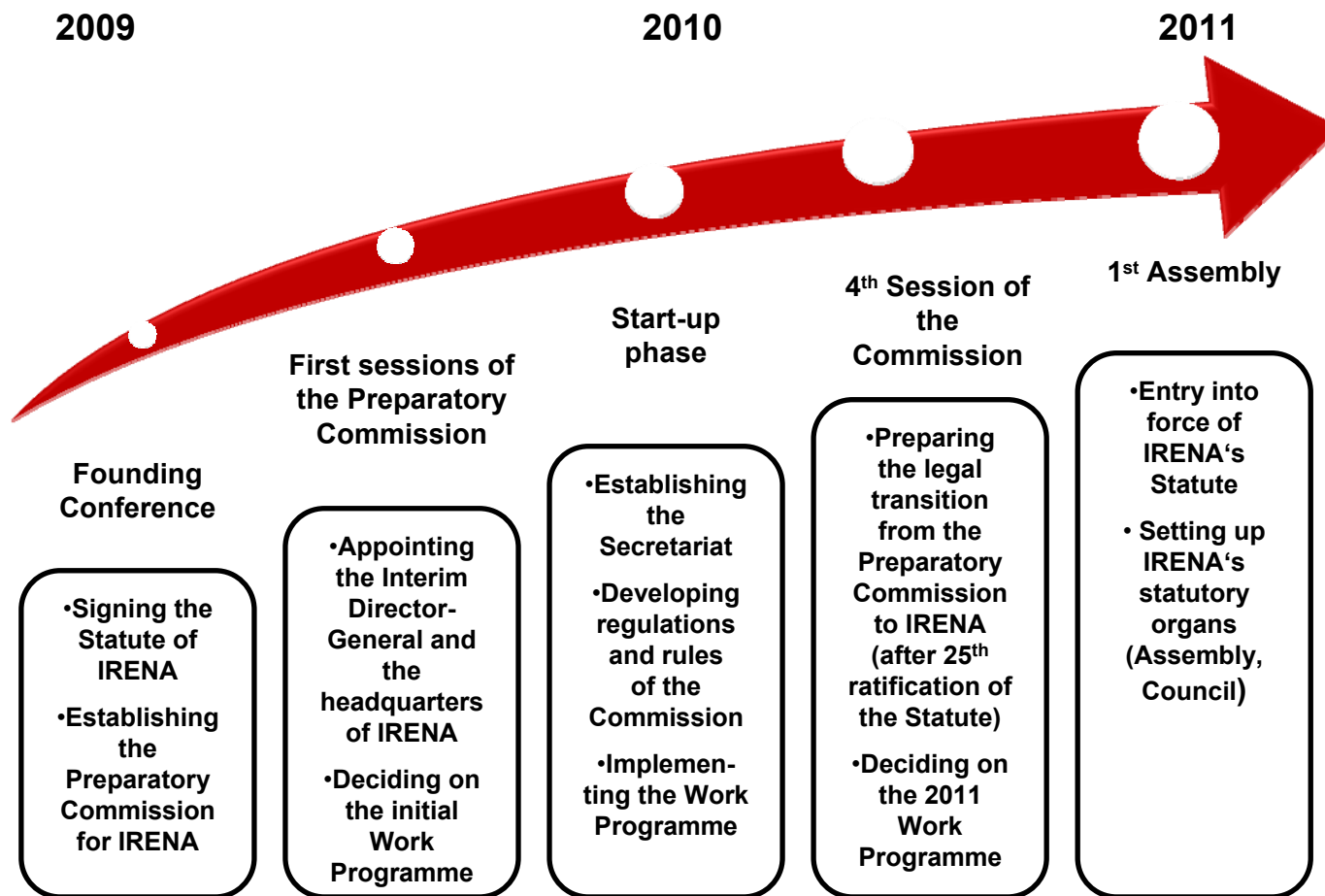
3. Current Status of IRENA

Structure after 25th ratification of IRENA's Statute



Institute of Energy Economics, Japan (IEEJ)
18 February, 2010
Convention Hall at the Prince Park Tower, Tokyo

4. Next steps



4. Next steps: 2010 Work Programme

3 priorities

- Establishment of Secretarial and IRENA's governance structures
- Development of expertise within IRENA, driven by stocktaking and developing analytic activities
- Initiating and implementing the first advisory programmes and pilot projects starting with knowledge management and capacity building

4. Next steps: 2010 Work Programme

- 1. Upper Level Management to be recruited**
- 2. Administrative support services**
- 3. Communication & outreach:**
 - 3.1 Communication Strategy
 - 3.2 Communication infrastructure
 - 3.3 Flagship & further publications
 - 3.4 DIREC & others

4. Next steps: 2010 Work Programme

4. Cooperation networks:

4.1 IRENA Liaison office

4.2 Stakeholders database

4.3 Stakeholders network

4.4 Structures for cooperation with stakeholders

4. Next steps: 2010 Work Programme

5. Knowledge Management

5.1 & 5.2 Strategy

5.3 Renewable Energy Policy Database

6. Innovation and Technology

- 1. Identification of R&D key stakeholders/innovation centres**
- 2. RE potentials:** Stocktaking of existing studies and analysis of next steps to help to raise awareness in developing countries about their potential
- 3. RE scenarios**
- 4. Roadmaps on RE technologies**
- 5. Impact assessments for innovative renewable energy strategies**
- 6. Contributing to the RE MEF Technology Action Plans**

4. Next steps: 2010 Work Programme

7. Advisory and Capacity Building Programmes

7.1. Policy advice:

Methodology

Pilot projects and **development of systematic advisory approaches**

Policy for innovative **renewable energy strategies** and their implementation potential for the different world regions

Two regional workshops on RE policy

4. Next steps: 2010 Work Programme

7. Advisory and Capacity Building Programmes

7.2 financial advice:

Cooperation with **Abu Dhabi Fund for Development**

Stocktaking all instruments and mechanisms of finance, including those existing under the Kyoto regime and those emerging from the Copenhagen Summit

Stocktaking successful **business models** to scale up RE

Financial and implementation **advice for rural electrification** using renewable energy

4. Next steps: 2010 Work Programme

7. Advisory and Capacity Building Programmes

7.3 Capacity building, knowledge sharing and training

- Capacity building **needs analysis** and strategy development
- Advise governments on **national capacity building strategies**
- Stocktaking and promotion of **existing training courses**
- **Overview of existing virtual university** and educational programmes for renewables
- First concept for an IRENA **Fellowship Programme**

5. Japan's contribution to IRENA

- **> 9% of Japan's electricity production from renewable energy (2007)**
- **Almost 30 years experience in promoting renewable energy (incentives, feed-in tariffs, RPS, R&D funding)**
- **Various well-known institutions (NEDO, IEEJ, NEF, JASE-W, etc.)**
 - **Active participation in IRENA Working Groups**
 - **Active contribution to the build up of IRENA's databases (statistics, policies, stakeholders, capacity building programmes, etc.)**
 - **Provision of seconded and permanent staff for IRENAs Secretariat**

6. Request to Japanese Industry and Academia

Involvement of stakeholders

- Various Japanese stakeholders working in the field of RE, like:
 - Business sector: Japan Solar Energy Society (JSES), Japan Wind Energy Association (JWEA), Japanese Business Alliance for Smart Energy Worldwide (JASE-W), Japan Council for Renewable Energy (JCRE)
 - Academia: National Institute of Advanced Industrial Science and Technology (AIST), New Energy and Industrial Technology Development Organization (NEDO), Nagoya Industrial Science Research Institute (NISRI), Institute of Applied Energy, Institute of Energy Economics, Japan (IEEJ)
- Effective & efficient involvement and interaction with IRENA has to be ensured
- Cooperation shall be flexible
- Experts from stakeholders will play an important part in IRENA's Working Groups

6. Request to Japanese Industry and Academia

Future Advisory and Scientific Boards

Working Groups as backbone of IRENA

- Dedicated to specific, well-defined topics
- With a clear mandate and a predetermined duration
- Reflecting in their totality the variety of IRENA's membership
- Chair might be a member's representative or an external expert
- Adherence to rules of good governance: meeting calendar, agenda, follow-up

notes

The IRENA Governance rules are still under consideration by our Member States and will apply, when defined, to any kind of cooperation.

IEEJ: 2010年3月掲載

Institute of Energy Economics, Japan (IEEJ)
18 February, 2010
Convention Hall at the Prince Park Tower, Tokyo

PREPARATORY COMMISSION FOR
INTERNATIONAL
RENEWABLE
ENERGY AGENCY **IRENA**

Thank you for your attention!