



**DIRECTORATE GENERAL OF ELECTRICITY
MINISTRY OF ENERGY AND MINERAL RESOURCES**

Opening Remarks

Dr. Hendra Iswahyudi

**Delivered at The Indonesia – Japan Renewable Energy Workshop on
Promoting Local Renewable Electricity Business**



Tokyo, February 15th, 2018



www.esdm.go.id



[@KementerianESDM](https://twitter.com/KementerianESDM)



Kementerian Energi
dan Sumber Daya Mineral

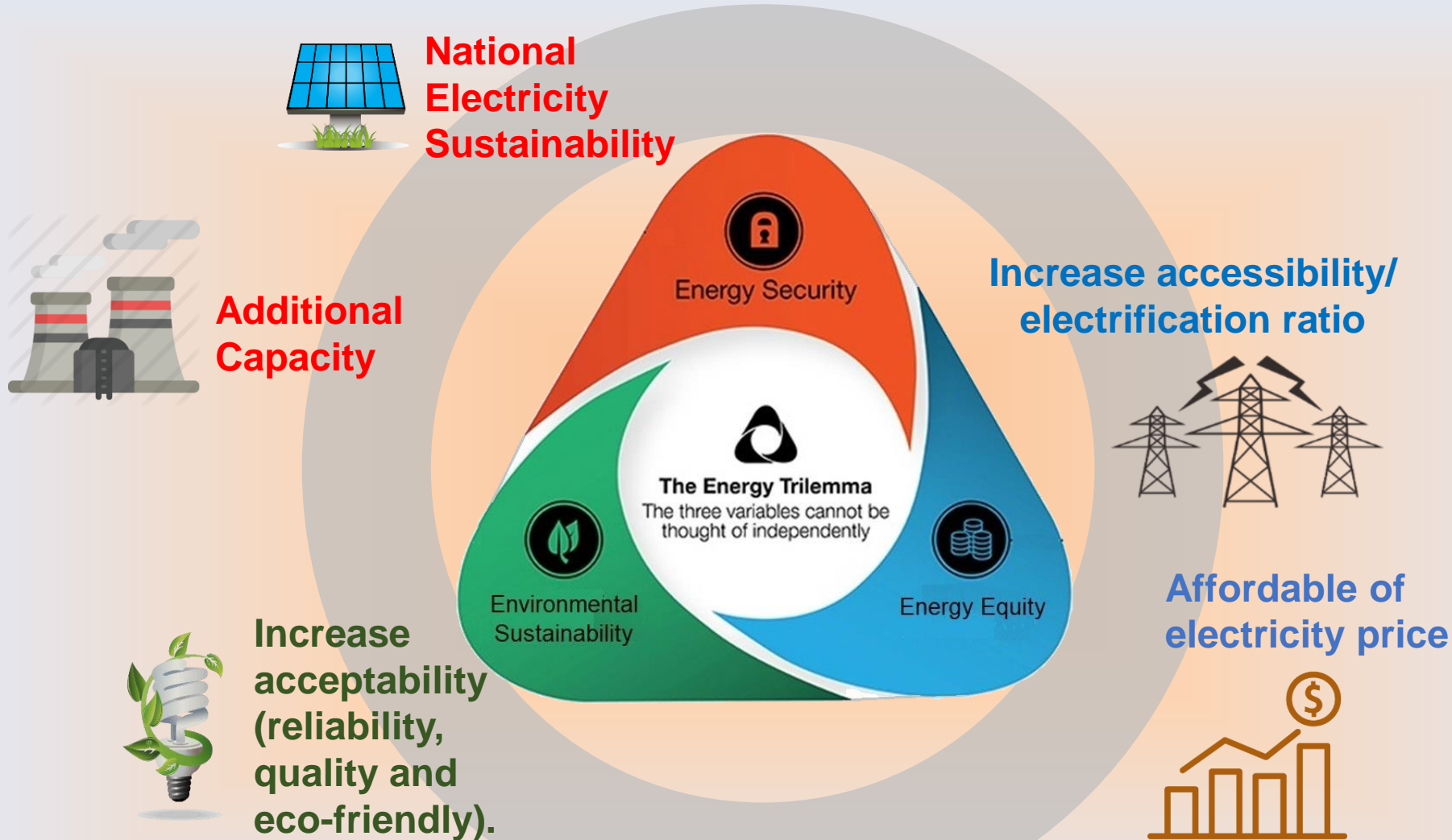


Kementerian ESDM



[@kesdm](https://www.instagram.com/kesdm)

ENERGY TRILEMMA



Source: World Energy Council



EQUITABLE ENERGY



#EquitableEnergy

Emphasize Social Welfare, Conducive Business Climate dan Economic Growth

Electrification Ratio

- ✓ [Increasing Power Generation Capacity \(35,000 MW\)](#)
- ✓ [Rural Electrification](#)
- ✓ [Electrifying 2,500 Villages](#)
- ✓ [Electricity Tariff of NRE](#)

Fair Distribution

- ✓ [Targetted Subsidy](#)
- ✓ [Single Retail Fuel Price](#)
- ✓ [City Gas](#)
- ✓ [LPG's Converter Kit for fisherman](#)
- ✓ [1 Gas Refueling Station Nozzle at Each gas station](#)

Sustainability & Affordability

- ✓ [Renewable Energy Utilization](#)
- ✓ [PPA Reform](#)
- ✓ [Mine Mouth Power Plant](#)
- ✓ [Wellhead Power Plant](#)

Investment & Growth

- ✓ [Mineral Added Value](#)
- ✓ [PI 10% from oil & gas contract](#)
- ✓ [Private Refinery](#)
- ✓ [Industrial Gas Price](#)
- ✓ [PSC Gross Split](#)
- ✓ [Sunk Cost Refund - PSC](#)

Bureaucracy Reform

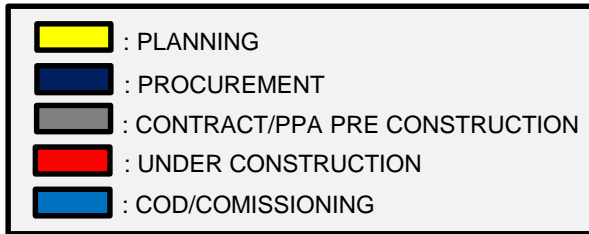
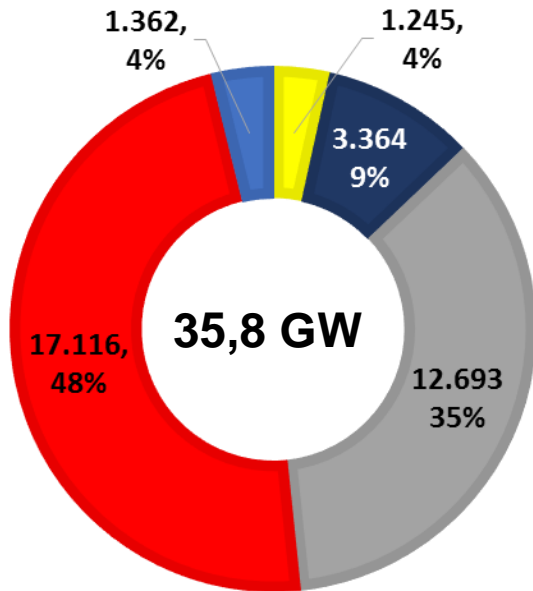
- ✓ [Simplification of Permits](#)
- ✓ [Online System](#)
- ✓ [Good Governance](#)
- ✓ [Accountability](#)

Sovereignty and Energy Resilient

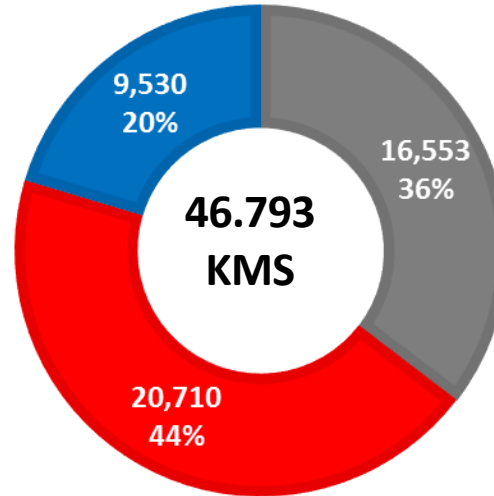


PROGRESS OF 35,000 MW PROGRAM (As of January 2018)

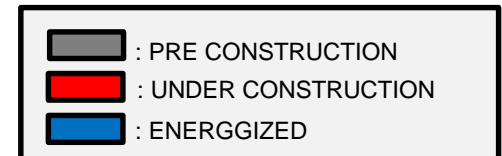
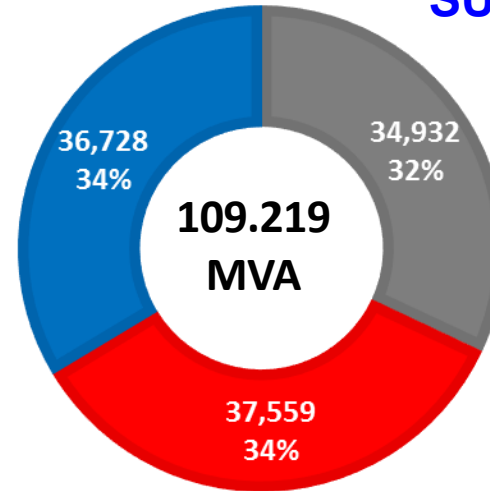
POWER GENERATION



TRANSMISSION NETWORK



SUB STATION



THREE APPROACHES TO INCREASE ACCESSIBILITY

Electrification ratio is carried out by addition of electricity infrastructure, pre-electrification program and small scale electricity supply business development (UPTLSK).

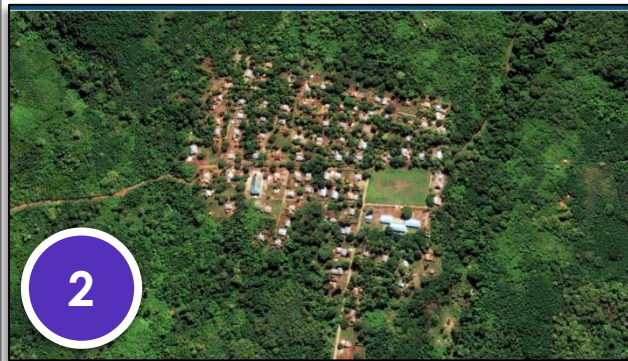
Village that located near by electrified village



Grid Extention



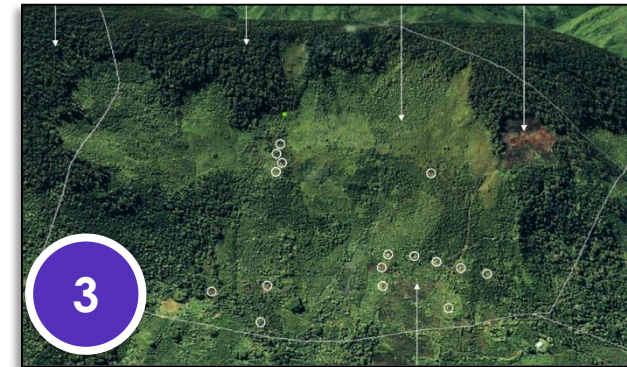
Village where the people live in the same place



Mini-grid off grid



Village where the people live scattered

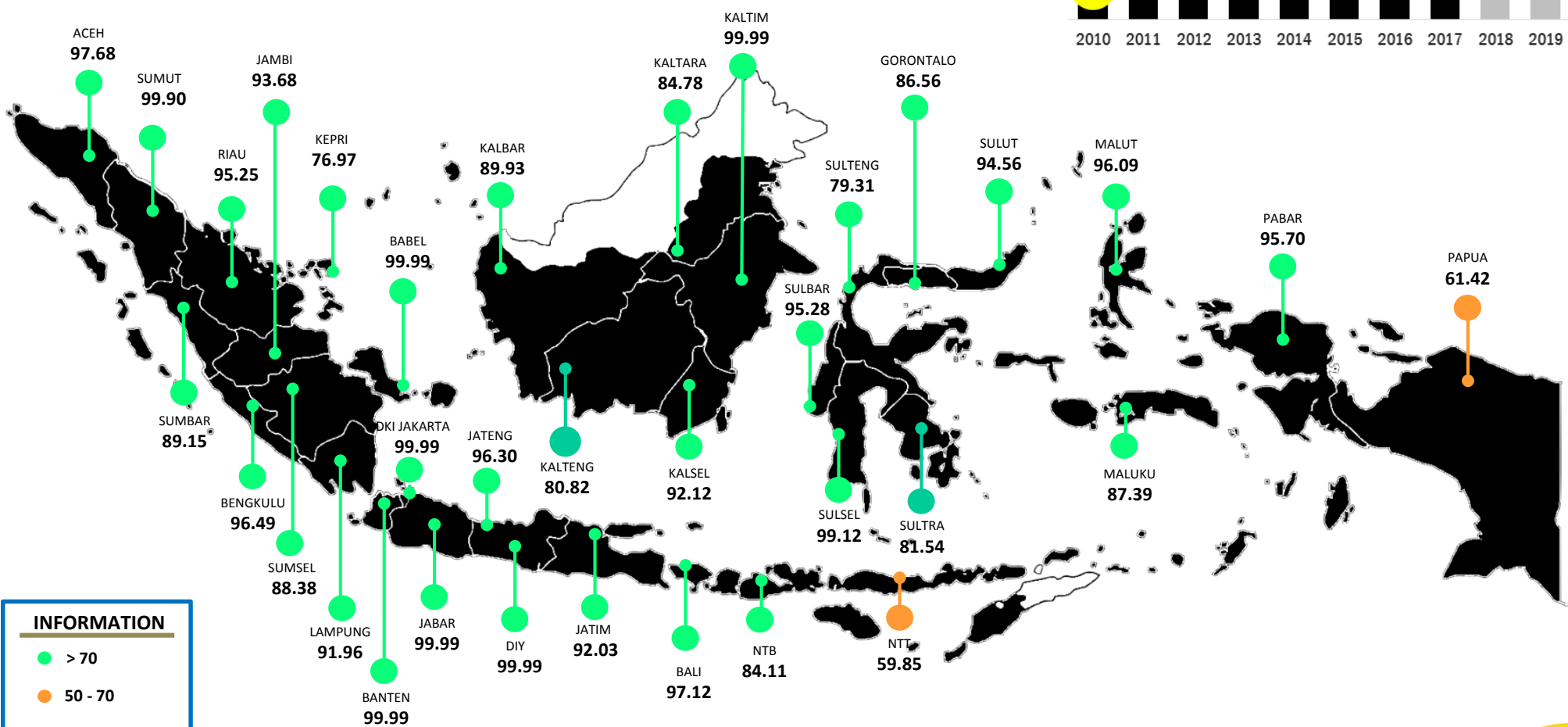
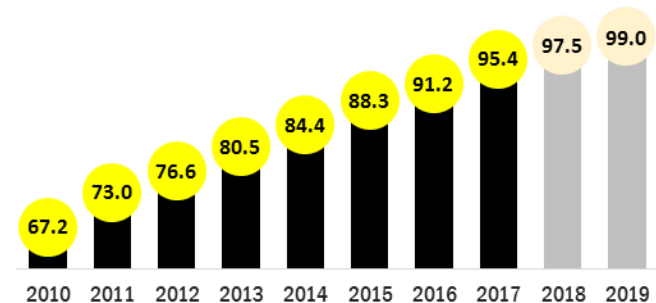


Solar home system



NATIONAL ELECTRIFICATION RATIO 2017 (%)

**National
95.35%**



INFORMATION

- > 70
- 50 - 70
- < 50



ILUMINATING FROM THE EDGE

Solar Energy Saving Lamp (LTSHE) Program



“ LTSHE is suitable as a pre-electrification program for house in villages which geographically and distribution of the people are scattered and it is difficult to be covered by PLN's grid. ”



Current Condition:

There are **2,500** villages that remain in the darkness, or **256,114** houses

TARGET:

Illuminating unelectrified villages within 2 years (2017-2018), especially for villages that are still remain in the darkness



2017

Installed in 5 provinces in Indonesia

Electrify **79,564** houses

2018

Installed in 15 Districts/Cities

Electrify **175,782** houses



#EnergyEquitable

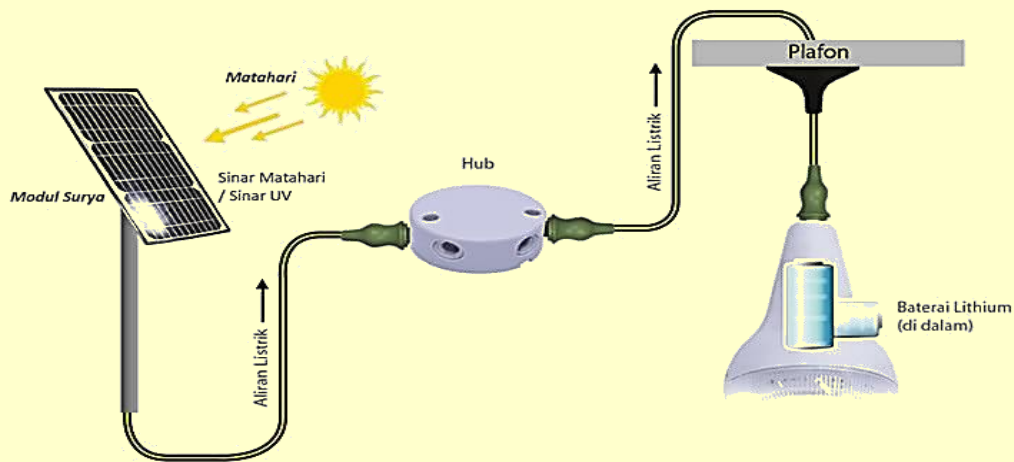


SOLAR ENERGY SAVING LAMP (LTSHE)



LTSHE COMPONENT:

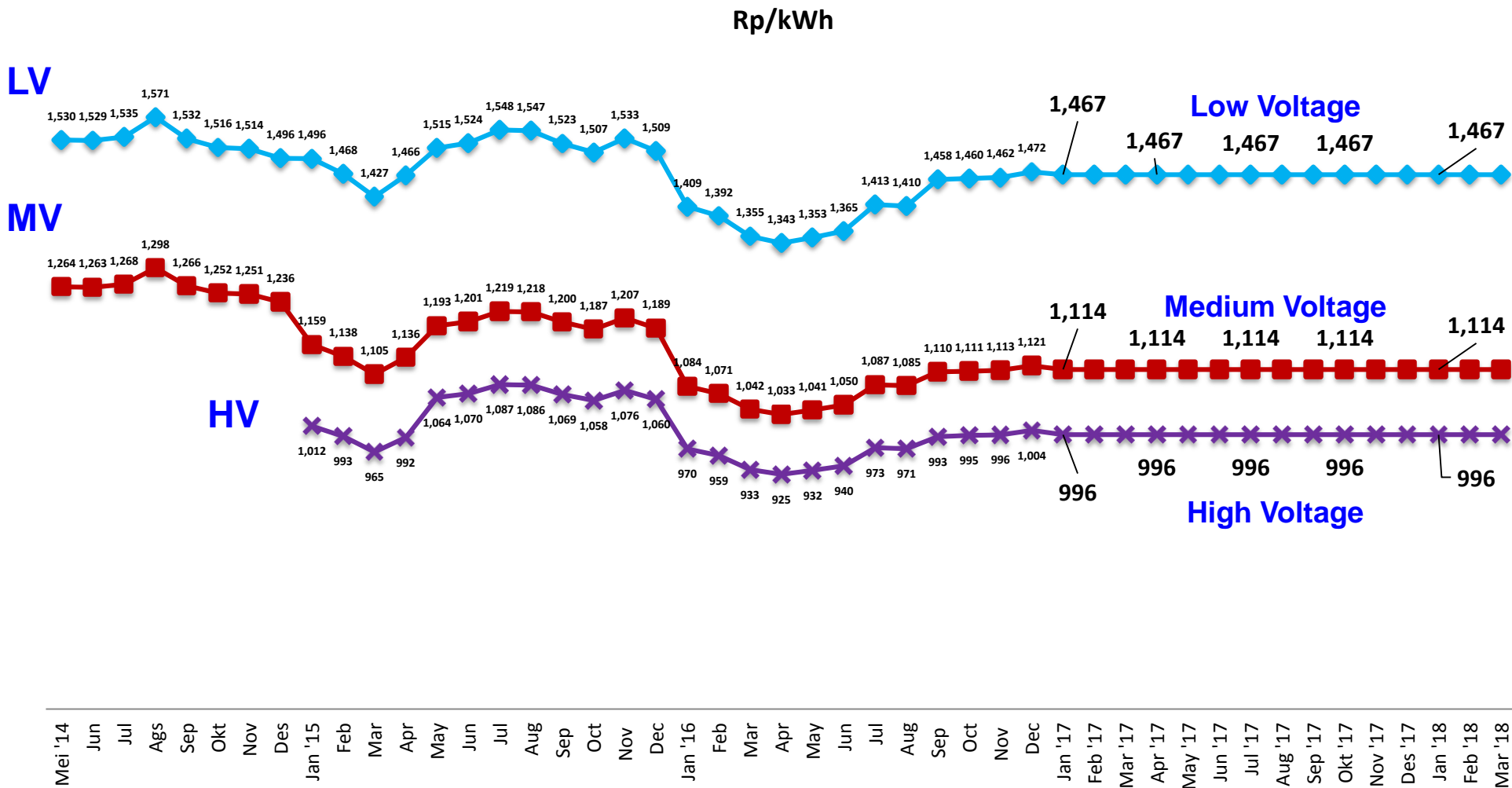
- ✓ Ultra efisien Light Emitting Diode (LED) 3 Watt = Fluorescent lamp 25 Watt;
- ✓ Lithium Energy Storage Pack (battery Lithium);
- ✓ chip of energy management.



Could light on up to 6 hours, 12 hours or could operate up to maximum 60 hours in one time charging.



REALIZATION OF ELECTRICITY TARIFF IN 2017 AND Q1-2018

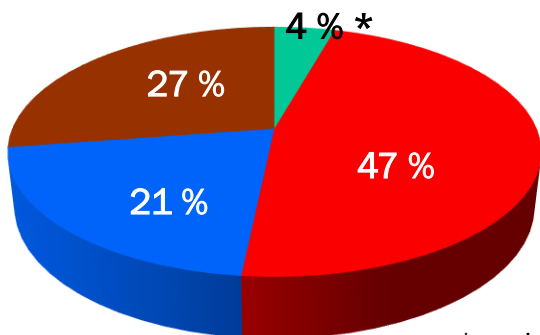


POLICY ON POWER GENERATION – ENERGY MIX

PRIMARY ENERGY MIX

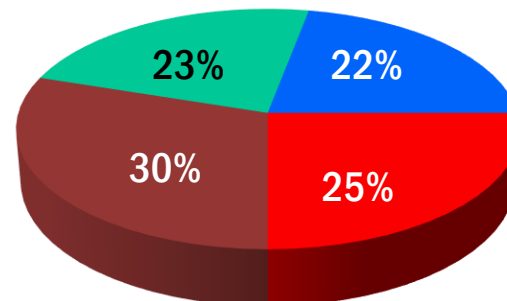
(National Energy Policy, GR No.79/2014)

- New and Renewable Energy
- Oil
- Gas
- Coal



REALIZATION 2015

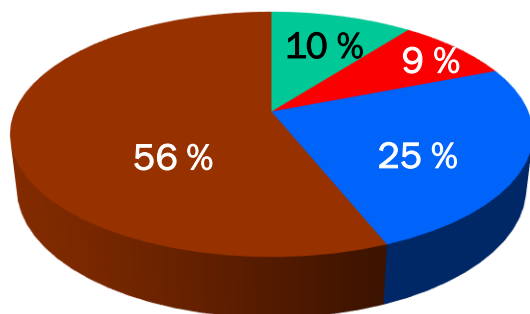
* excluded biomass



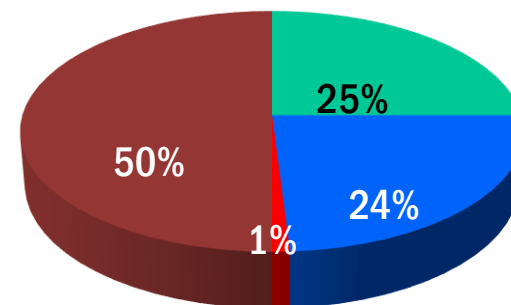
TARGET 2025

ENERGY MIX OF POWER GENERATION

(Draft of RUKN 2015-2034)



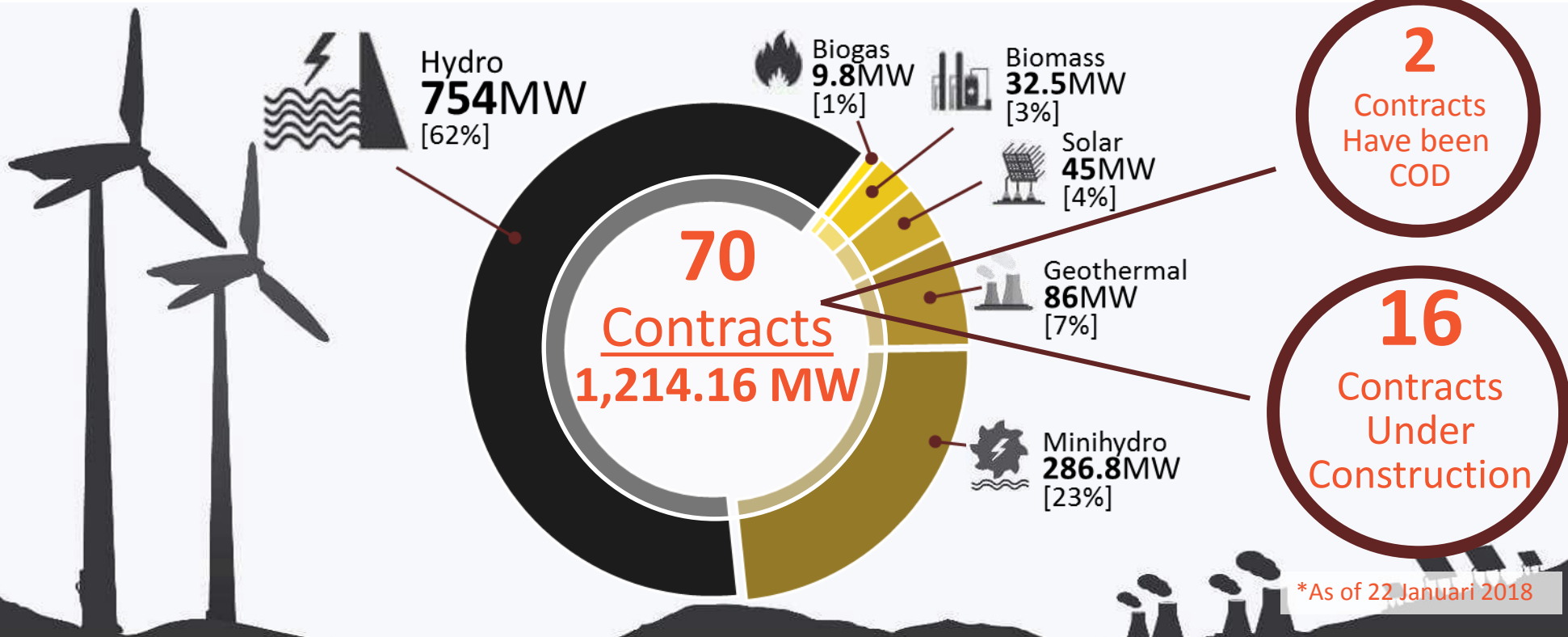
REALIZATION 2015



TARGET 2025



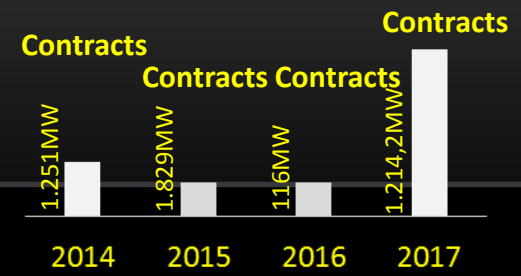
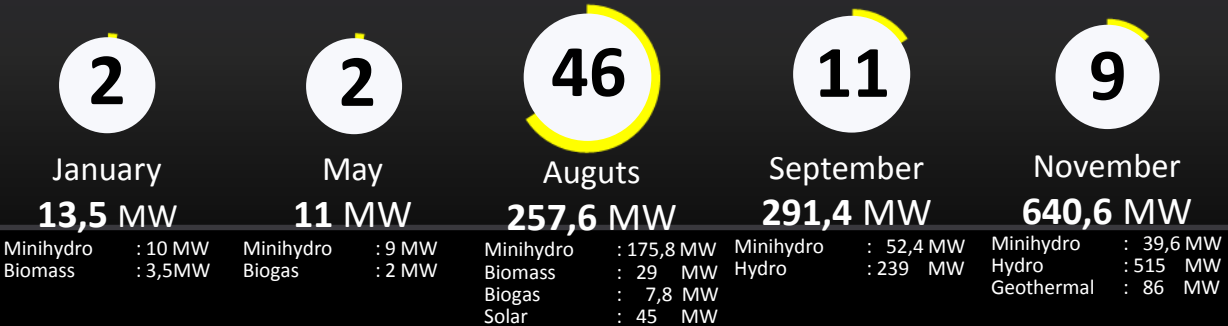
70 Contract of NRE Power Gen. in 2017



*As of 22 Januari 2018

■ Penandatanganan 70 Kontrak Pembangkit Listrik EBT Tahun 2017

■ Progress of NRE Generation Contracts (2014-2017)



SIMPLIFICATION AND REVOCATION OF REGULATIONS

As an effort to create a conducive investment climate, the Ministry of EMR has simplified and revoked several regulations in 2018.

15

Regulations have been **revoked**

And there are more

- **Ministry of EMR Regulation No. 2 year 2018** concerning The Compulsory Enforcement of National Standard of Indonesia (SNI) in the Field of Electricity.

This regulation has revoked 10 Ministry of EMR Regulations and 1 Ministry of EMR Decree.

- 4 Ministry of EMR Regulations have been revoked, as follows:
 1. **The Ministry of Mines and Energy No. 02 P/451/M.PE/1991** concerning the Relationship of the Electricity Business Authority Holders and the Holders of Electricity Business Permit For Public Interest with the society;
 2. **The Ministry of Mines and Energy No. 03 P/451/M.PE/1991** concerning Requirements for Connecting Electricity;
 3. **The Ministry of Energy and Mineral Resources Regulation No. 33 Year 2008** concerning Electricity Selling Price Provided by PT Batam, National Electricity Service;
 4. **The Ministry of Energy and Mineral Resources Regulation No. 04 Year 2012** concerning Electricity Purchase Price by PT PLN (Persero) from Power Generation Using Small and Medium Scale Renewable Energy or Excess Power.





Thank You

Contact : report@tky.ieej.or.jp



www.esdm.go.id



[@KementerianESDM](https://twitter.com/KementerianESDM)



Kementerian Energi
dan Sumber Daya Mineral



Kementerian ESDM



[@kesdm](https://www.instagram.com/kesdm)